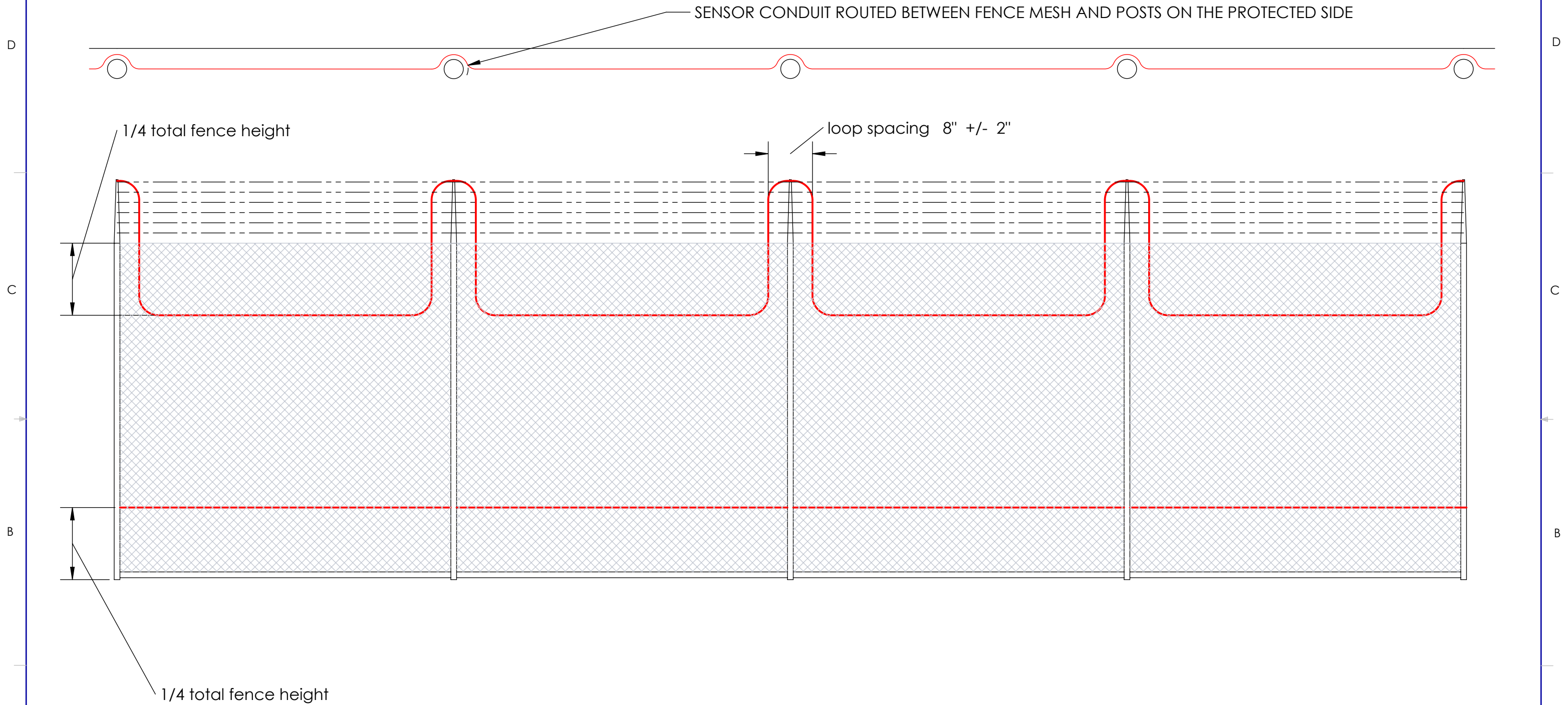


# PL-1 Grade Sensor, Line Panels

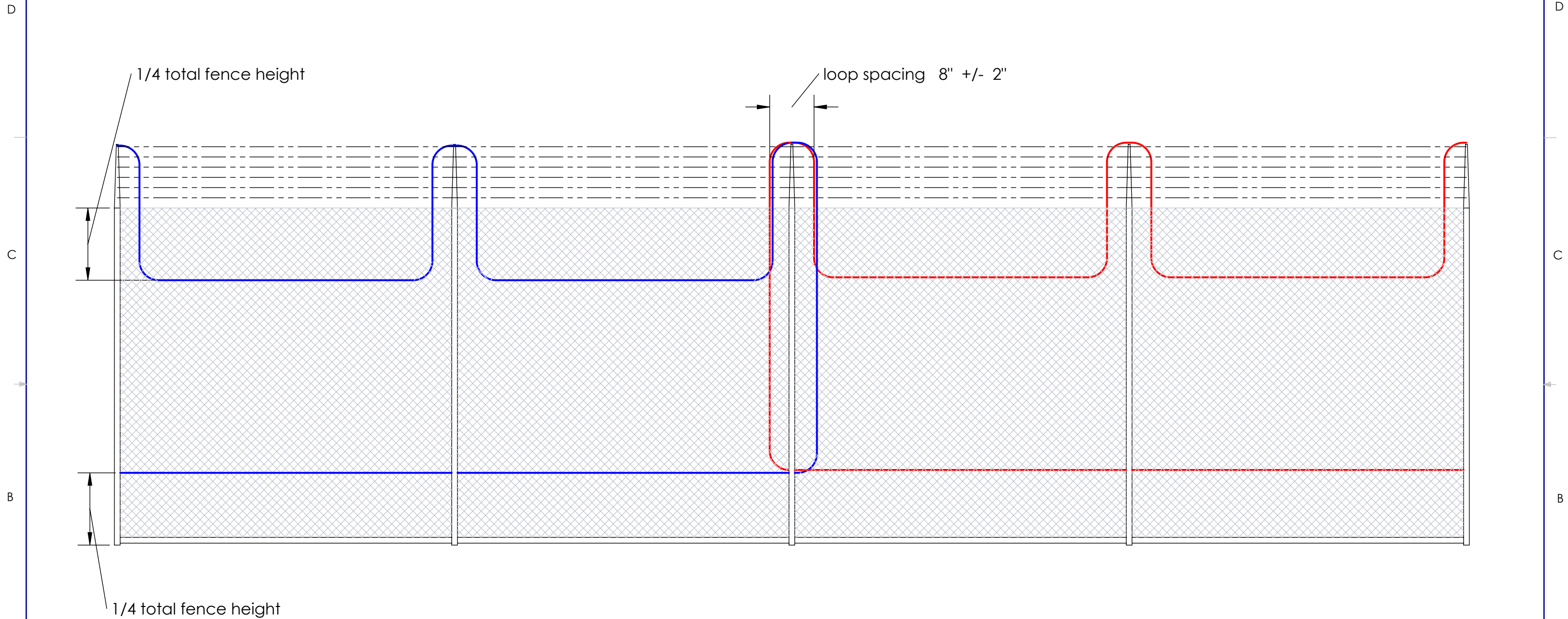


CONFIDENTIAL-LIMITED DISTRIBUTION

**NOTES** Typical sensor cable installation on a high security outrigger style fence.  
 Sensor consists of fiber optic sensing cable in flexible conduit, attached to the fence fabric using stainless steel wire ties with a minimum spacing of 12 inches.

		NAME	DATE	UNLESS OTHERWISE SPECIFIED:	TITLE: PL-1 Grade Sensor, Line Panels		
DRAWN				DIMENSIONS ARE IN INCHES TOLERANCES: FRACTIONAL ± ANGULAR: MACH ± BEND ± TWO PLACE DECIMAL ± THREE PLACE DECIMAL ±	DWG. NO. DW-SM-005	<b>PROPRIETARY AND CONFIDENTIAL</b> THE INFORMATION CONTAINED IN THIS DRAWING IS THE SOLE PROPERTY OF FIBER SENSYS INC. ANY REPRODUCTION IN PART OR AS A WHOLE WITHOUT THE WRITTEN PERMISSION OF FIBER SENSYS INC. IS PROHIBITED.	
CHECKED					REV B		2925 NW Aloclek Dr, Suite 120 Hillsboro, OR 97124 USA (503)692-4430
ENG APPR.							
MFG APPR.							
SIZE <b>B</b>				DO NOT SCALE DRAWING	SHEET 1 OF 7		

# PL-1 Grade Sensor, Line Panel, Zone Overlap



CONFIDENTIAL-LIMITED DISTRIBUTION

NOTES  
 Typical sensor installation on a high security out-rigger style fence.  
 Sensor consists of fiber optic sensing cable in flexible conduit, attached to the fence fabric using stainless steel wire ties with a minimum spacing of 12 inches.

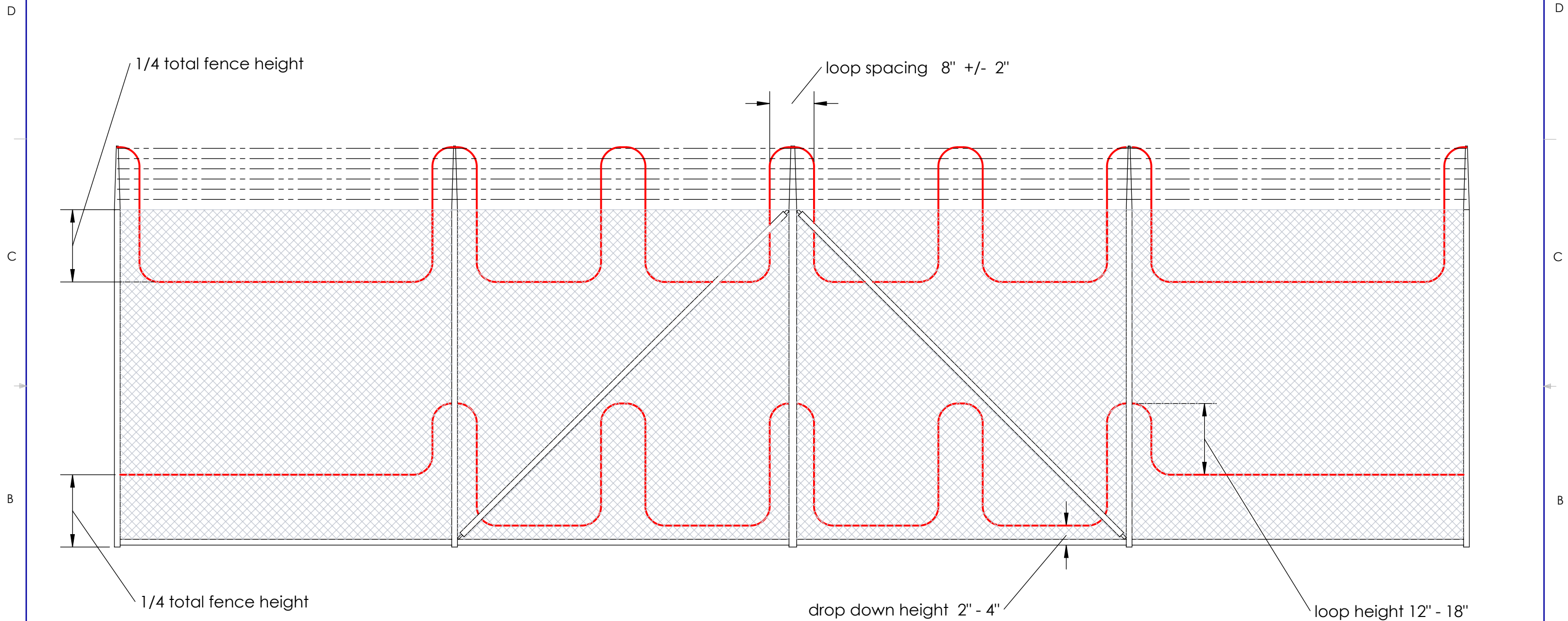
	NAME	DATE	UNLESS OTHERWISE SPECIFIED:
DRAWN			DIMENSIONS ARE IN INCHES
CHECKED			TOLERANCES:
ENG APPR.			FRACTIONAL ±
MFG APPR.			ANGULAR: MACH ± BEND ±
			TWO PLACE DECIMAL ±
			THREE PLACE DECIMAL ±
SIZE	<b>B</b>		DO NOT SCALE DRAWING

TITLE: PL-1 Grade Sensor, Line Panel, Zone Overlap
DWG. NO. DW-SM-005
REV B
SHEET 2 OF 7

**PROPRIETARY AND CONFIDENTIAL**  
 THE INFORMATION CONTAINED IN THIS DRAWING IS THE SOLE PROPERTY OF FIBER SENSYS INC. ANY REPRODUCTION IN PART OR AS A WHOLE WITHOUT THE WRITTEN PERMISSION OF FIBER SENSYS INC. IS PROHIBITED.

**Fiber SenSys**  
 2925 NW Aloclek Dr, Suite 120  
 Hillsboro, OR 97124 USA  
 (503)692-4430

# PL-1 Grade Sensor, Reinforced Panels

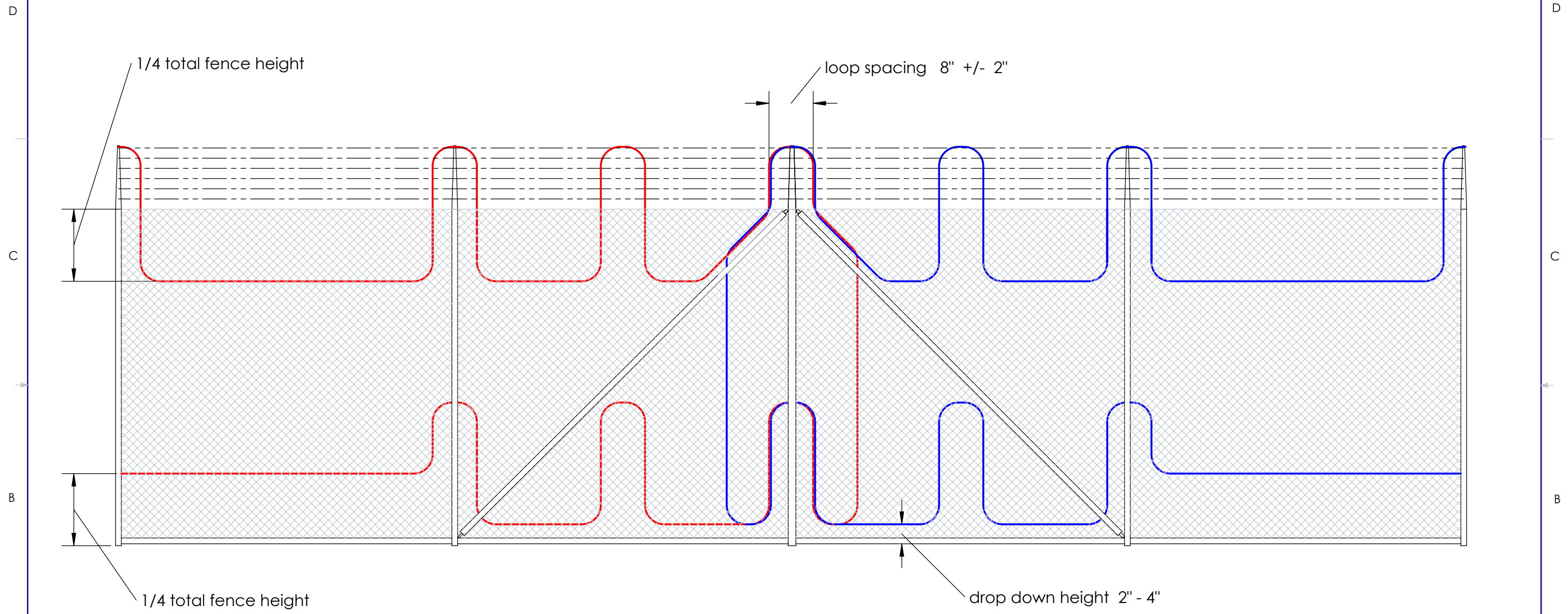


CONFIDENTIAL-LIMITED DISTRIBUTION

**NOTES**  
 Typical sensor installation on a high security out-rigger style fence with mid-zone reinforced panels.  
 Sensor consists of fiber optic sensing cable in flexible conduit, attached to the fence fabric using stainless steel wire ties with a minimum spacing of 12 inches.

DRAWN	NAME	DATE	UNLESS OTHERWISE SPECIFIED: DIMENSIONS ARE IN INCHES TOLERANCES: FRACTIONAL ± ANGULAR: MACH ± BEND ± TWO PLACE DECIMAL ± THREE PLACE DECIMAL ±	TITLE: PL-1 Grade Sensor, Reinforced Panels		<b>Fiber SenSys</b> PROPRIETARY AND CONFIDENTIAL THE INFORMATION CONTAINED IN THIS DRAWING IS THE SOLE PROPERTY OF FIBER SENSYS INC. ANY REPRODUCTION IN PART OR AS A WHOLE WITHOUT THE WRITTEN PERMISSION OF FIBER SENSYS INC. IS PROHIBITED.	2925 NW Aloclek Dr, Suite 120 Hillsboro, OR 97124 USA (503)692-4430	
	CHECKED				DWG. NO. DW-SM-005			
	ENG APPR.				REV B			
	MFG APPR.							
SIZE <b>B</b>			DO NOT SCALE DRAWING	SHEET 3 OF 7				

# PL-1 Grade Sensor, Reinforced Panels, Zone Overlap



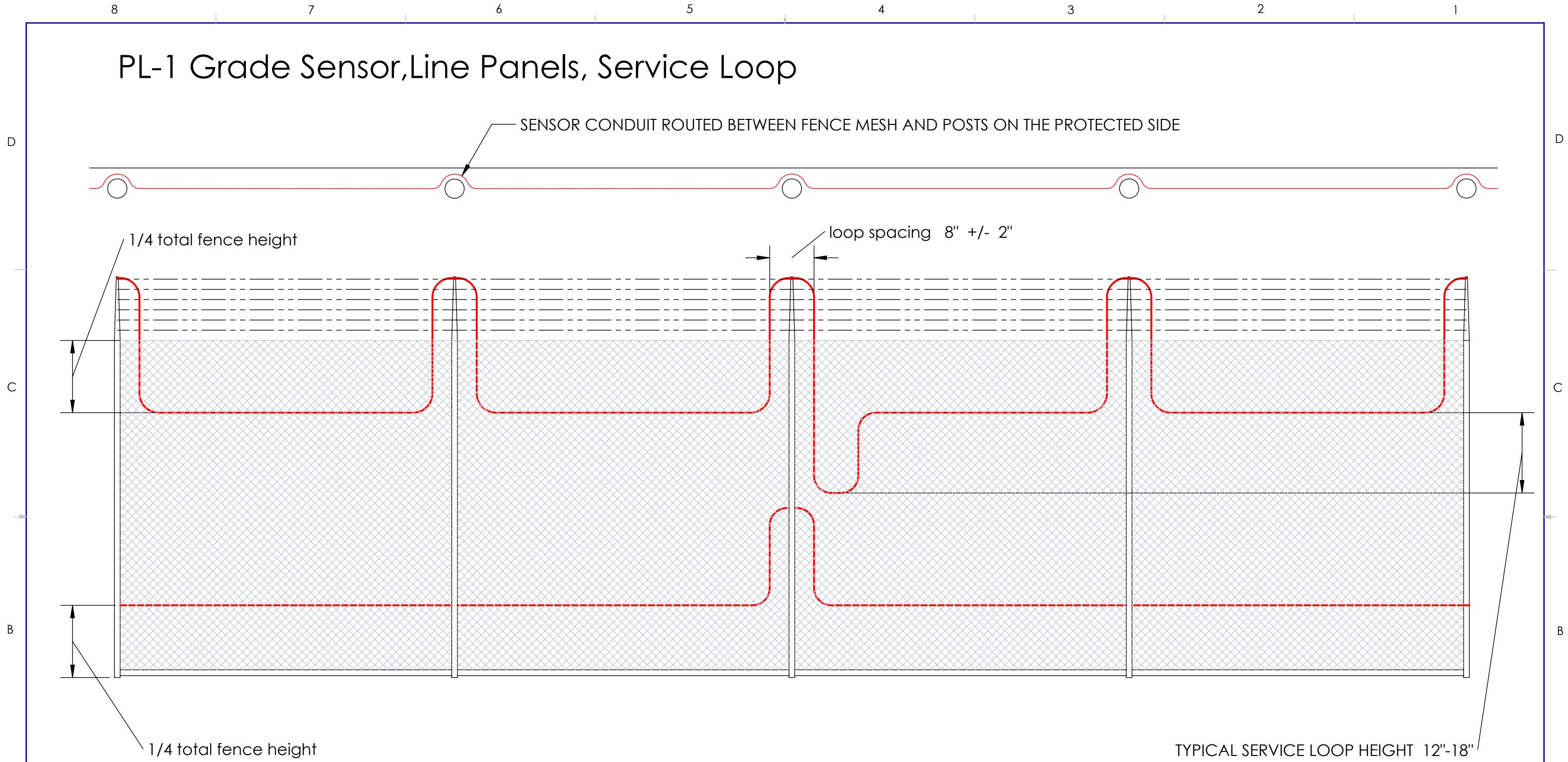
CONFIDENTIAL-LIMITED DISTRIBUTION

**NOTES** Typical sensor installation on a high security out-rigger style fence with mid-span reinforced panels or reinforced corner post, at zone ends.

Sensor consists of fiber optic sensing cable in flexible conduit, attached to the fence fabric using stainless steel wire ties with a minimum spacing of 12 inches.

NAME	DATE	UNLESS OTHERWISE SPECIFIED:	TITLE:	Fiber SenSys	
DRAWN		DIMENSIONS ARE IN INCHES	PL-1 Grade Sensor, Reinforced Panels Zone Overlap	<b>PROPRIETARY AND CONFIDENTIAL</b> THE INFORMATION CONTAINED IN THIS DRAWING IS THE SOLE PROPERTY OF FIBER SENSYS INC. ANY REPRODUCTION IN PART OR AS A WHOLE WITHOUT THE WRITTEN PERMISSION OF FIBER SENSYS INC. IS PROHIBITED.	
CHECKED		TOLERANCES:	DWG. NO. DW-SM-005		
ENG APPR.		FRACTIONAL ±	REV B		
MFG APPR.		ANGULAR: MACH ± BEND ±			
SIZE	<b>B</b>	TWO PLACE DECIMAL ±		SHEET 4 OF 7	2925 NW Aloclek Dr, Suite 120 Hillsboro, OR 97124 USA (503)692-4430
		THREE PLACE DECIMAL ±			
		DO NOT SCALE DRAWING			

# PL-1 Grade Sensor, Line Panels, Service Loop



TYPICAL SERVICE LOOP HEIGHT 12"-18"

CONFIDENTIAL-LIMITED DISTRIBUTION

**NOTES** Typical sensor service or maintenance loop installation on a high security out-rigger style fence. Service loops are installed in top and bottom pairs, every 45 meters in fence length on long zones, and in the middle of zones shorter than 90 meters in fence length.

Sensor consists of fiber optic sensing cable in flexible conduit, attached to the fence fabric using stainless steel wire ties with a minimum spacing of 12 inches.

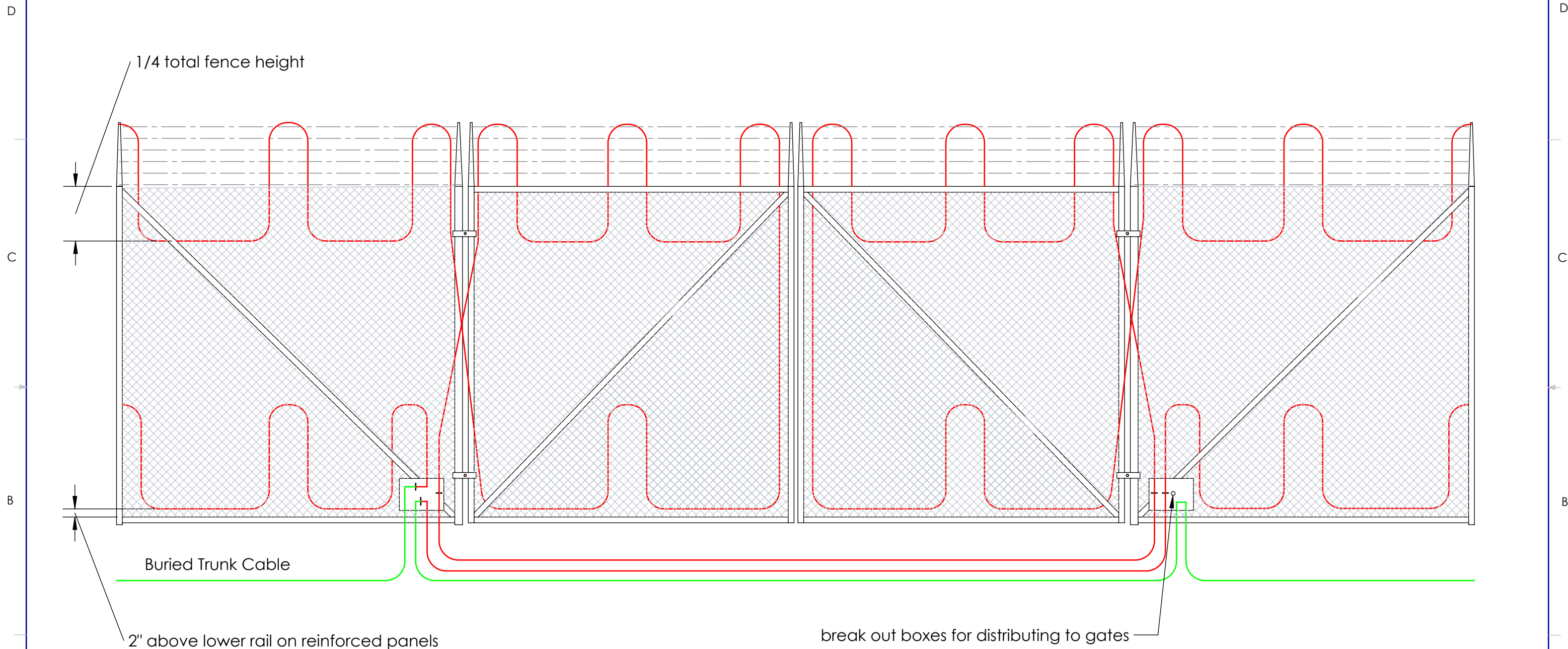
	NAME	DATE	UNLESS OTHERWISE SPECIFIED:
DRAWN			DIMENSIONS ARE IN INCHES
CHECKED			TOLERANCES:
ENG APPR.			FRACTIONAL ±
MFG APPR.			ANGULAR: MACH ± BEND ±
			TWO PLACE DECIMAL ±
			THREE PLACE DECIMAL ±
SIZE	<b>B</b>		DO NOT SCALE DRAWING

TITLE: PL-1 Grade Sensor, Line Panels, Service Loop	
DWG. NO. DW-SM-005	PROPRIETARY AND CONFIDENTIAL
REV B	THE INFORMATION CONTAINED IN THIS DRAWING IS THE SOLE PROPERTY OF FIBER SENSYS INC. ANY REPRODUCTION IN PART OR AS A WHOLE WITHOUT THE WRITTEN PERMISSION OF FIBER SENSYS INC. IS PROHIBITED.
SHEET 5 OF 7	

**Fiber SenSys**

2925 NW Aloclek Dr, Suite 120  
Hillsboro, OR 97124 USA  
(503)692-4430

# PL-1 Grade Sensor, Double Leaf Swing Gate



CONFIDENTIAL-LIMITED DISTRIBUTION

**NOTES** Typical sensor installation on a high security, PL1 style fence with a double swinging gate included in a single zone. Note the buried link from one side gate to the other.

Sensor consists of fiber optic sensing cable in flexible conduit, attached to the fence fabric using stainless steel wire ties with a minimum spacing of 12 inches.

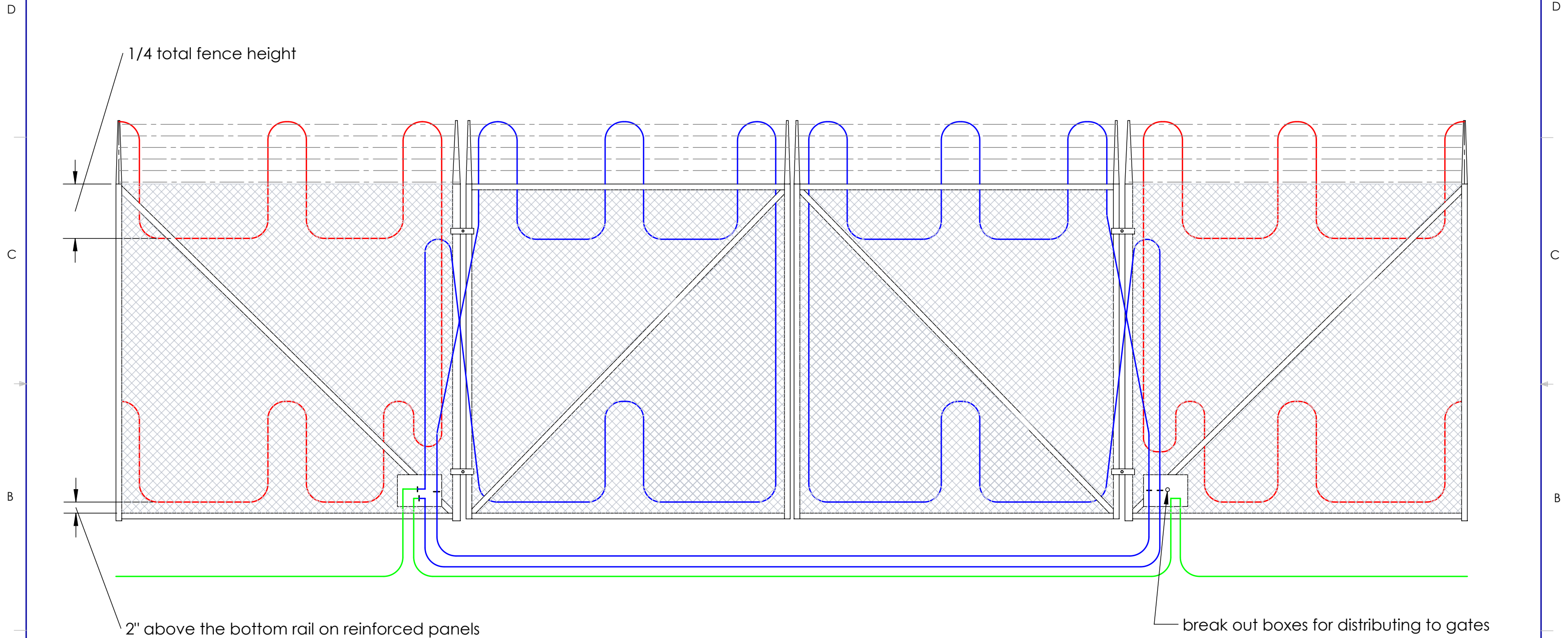
	NAME	DATE	UNLESS OTHERWISE SPECIFIED:
DRAWN			DIMENSIONS ARE IN INCHES
CHECKED			TOLERANCES:
ENG APPR.			FRACTIONAL ±
MFG APPR.			ANGULAR: MACH ± BEND ±
			TWO PLACE DECIMAL ±
			THREE PLACE DECIMAL ±
SIZE	<b>B</b>		DO NOT SCALE DRAWING

TITLE: PL-1 Grade Sensor, Double Leaf Swing Gate	
DWG. NO. DW-SM-005	PROPRIETARY AND CONFIDENTIAL
REV B	THE INFORMATION CONTAINED IN THIS DRAWING IS THE SOLE PROPERTY OF FIBER SENSYS INC. ANY REPRODUCTION IN PART OR AS A WHOLE WITHOUT THE WRITTEN PERMISSION OF FIBER SENSYS INC. IS PROHIBITED.
SHEET 6 OF 7	

**Fiber SenSys**

2925 NW Aloclek Dr, Suite 120  
Hillsboro, OR 97124 USA  
(503)692-4430

# PL-1 Grade Sensor, Double Leaf Swing Gate, Isolated Gate Zone



CONFIDENTIAL-LIMITED DISTRIBUTION

NOTES Typical installation on a high security PL1 style fence with a double swinging gate zone. Note the buried link from one side gate to the other.

Sensor consists of fiber optic sensing cable in flexible conduit, attached to the fence fabric using stainless steel wire ties with a minimum spacing of 12 inches.

DRAWN	NAME	DATE	UNLESS OTHERWISE SPECIFIED:	TITLE: PL-1 Grade Sensor, Double Leaf Swing Gate Isolated Gate Zone	<b>Fiber SenSys</b> <small>THE INFORMATION CONTAINED IN THIS DRAWING IS THE SOLE PROPERTY OF FIBER SENSYS INC. ANY REPRODUCTION IN PART OR AS A WHOLE WITHOUT THE WRITTEN PERMISSION OF FIBER SENSYS INC. IS PROHIBITED.</small>
	CHECKED		DIMENSIONS ARE IN INCHES	DWG. NO. DW-SM-005	
	ENG APPR.		TOLERANCES:	REV B	
	MFG APPR.		FRACTIONAL ±		
SIZE	<b>B</b>		DO NOT SCALE DRAWING	SHEET 7 OF 7	2925 NW Aloclek Dr, Suite 120 Hillsboro, OR 97124 USA (503)692-4430